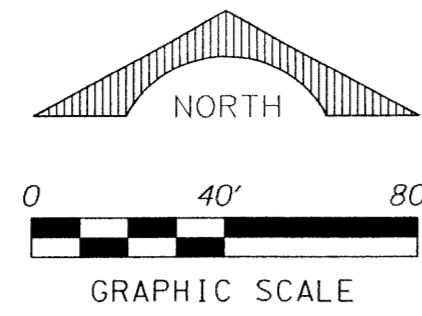


PERIMETER

SURVEYING & MAPPING
 Certificate of Authorization No. LB7264
 Prepared by: Jeff S. Hodapp, P.S.M.
 951 Broken Sound Parkway, Suite 108
 Boca Raton, Florida 33487
 Tel: (561) 241-9988
 Fax: (561) 241-5182



THOUSAND OAKS

A PORTION OF THE NORTHEAST ONE-QUARTER OF SECTION 30, TOWNSHIP 42 SOUTH, RANGE 43, EAST, CITY OF RIVIERA BEACH, PALM BEACH COUNTY, FLORIDA.

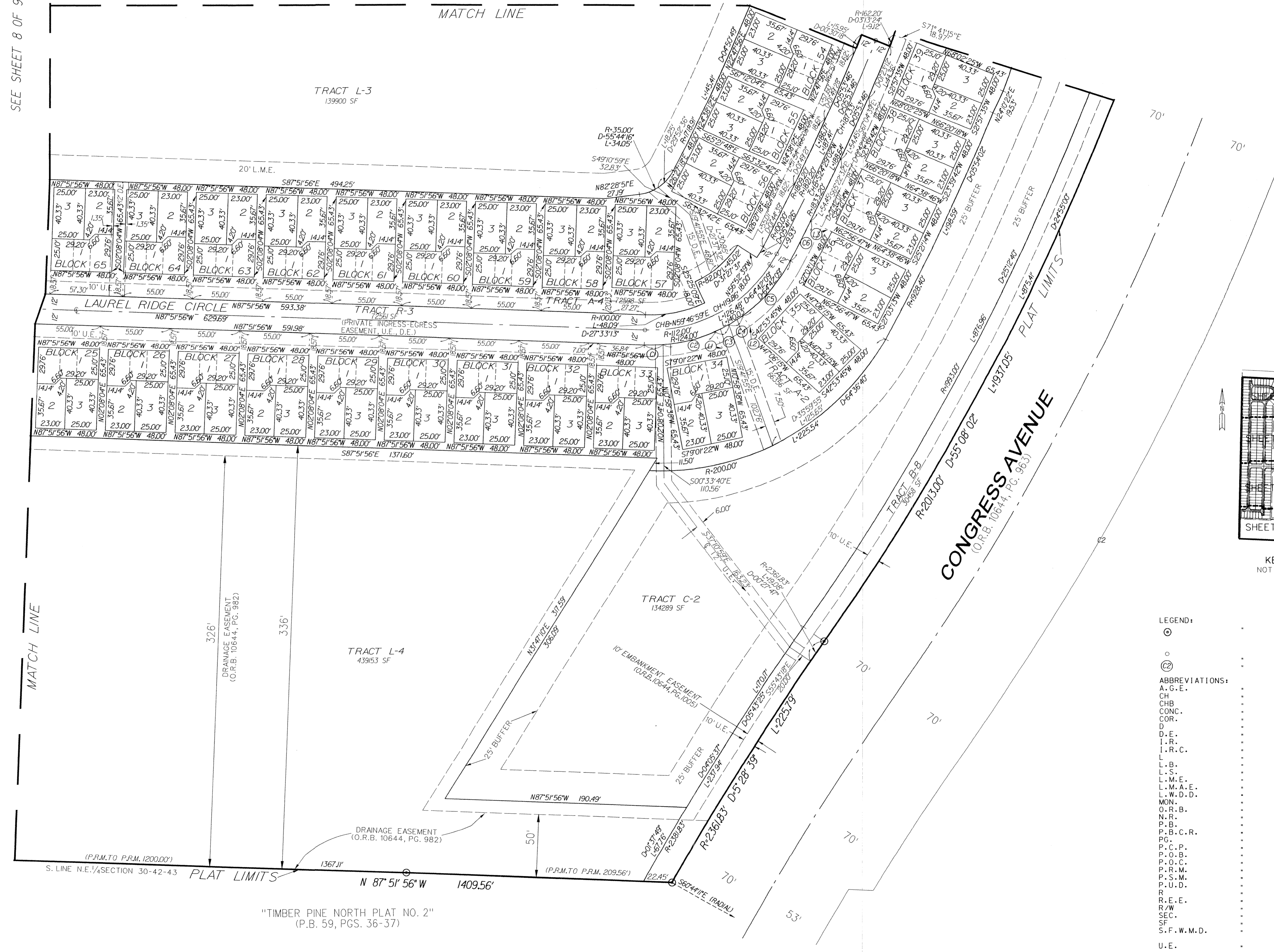
140

CURVE TABLE			
CURVE	RADIUS	LENGTH	DELTA
C1	124.00'	14.70'	6°47'29"
C2	124.00'	42.42'	19°36'00"
C3	124.00'	12.74'	5°39'18"
C4	124.00'	12.89'	5°57'15"
C5	124.00'	57.79'	26°42'06"
C6	1833.20'	35.37'	1°06'19"

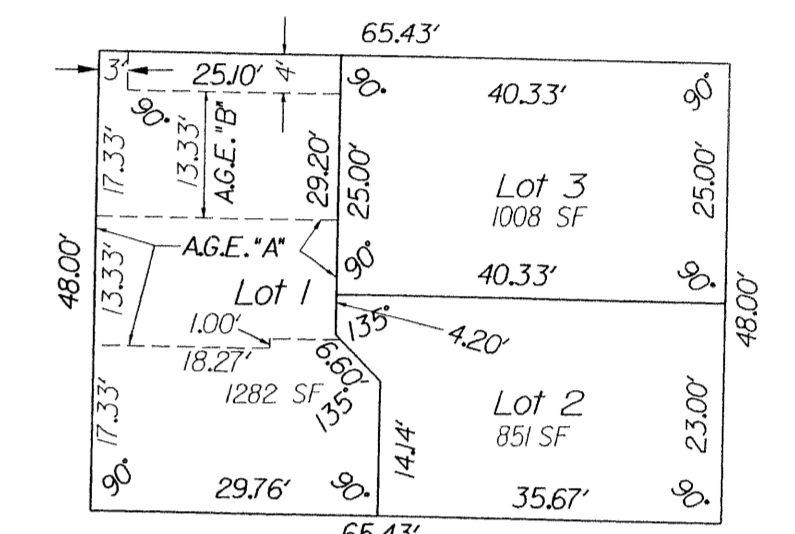
LINE TABLE		
LINE	BEARING	DISTANCE
L1	S24°15'25"E	23.01'
L2	S35°51'59"E	21.64'
L3	S63°40'25"E	18.71'

SEE SHEET 5 OF 9

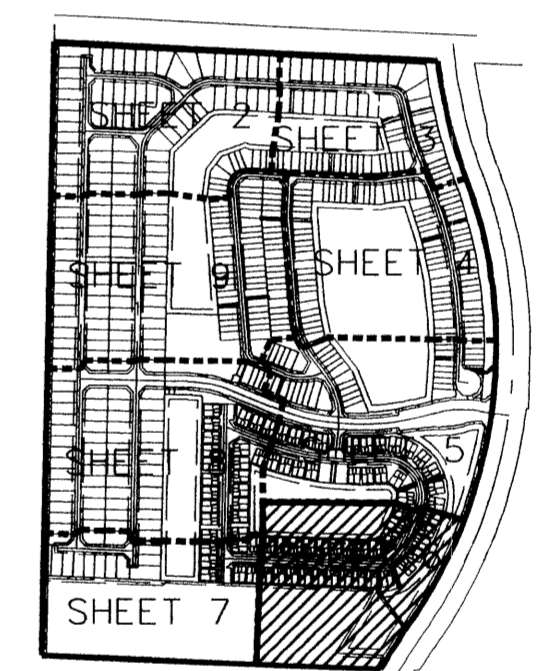
SEE SHEET 8 OF 9



SHEET 6 OF 9



BLOCKS #3-79
TYPICAL
(NOT TO SCALE)



KEY MAP
NOT TO SCALE

SEE SHEET 7 OF 9

LEGEND:

- ⊙ SET P.R.M. (UNLESS OTHERWISE NOTED)-4" DIAMETER BRASS DISK IN CONC. MON. STAMPED •LB7264
- P.C.P. CURVE OR LINE TABLE DESIGNATION

ABBREVIATIONS:

- A.G.E. ACCESS AND GARAGE EASEMENT
- CH CHORD
- CHB CHORD BEARING
- CONC. CONCRETE
- COR. CORNER
- D. DELTA (CENTRAL ANGLE)
- D.E. DRAINAGE EASEMENT
- I.R. IRON ROD
- I.R.C. IRON ROD AND CAP
- L. LENGTH
- L.B. LICENSED BUSINESS
- L.S. LICENSED SURVEYOR
- L.M.E. LAKE MAINTENANCE EASEMENT
- L.M.A.E. LAKE MAINTENANCE ACCESS EASEMENT
- L.W.D.D. LAKE WORTH DRAINAGE DISTRICT
- MON. MONUMENT
- O.R.B. OFFICIAL RECORDS BOOK
- N.R. NON-RADIAL
- P.B. PLAT BOOK
- P.B.C.R. PALM BEACH COUNTY RECORDS
- PG. PAGE
- P.C.P. PERMANENT CONTROL POINT
- P.O.B. POINT OF BEGINNING
- P.O.C. POINT OF COMMENCEMENT
- P.R.M. PERMANENT REFERENCE MONUMENT
- P.S.M. PROFESSIONAL SURVEYOR & MAPPER
- P.U.D. PLANNED UNIT DEVELOPMENT
- R. RADIUS
- R.E.E. ROOF ENCROACHMENT EASEMENT
- R/W. RIGHT-OF-WAY
- SEC. SECTION
- SF. SQUARE FEET
- S.F.W.M.D. SOUTH FLORIDA WATER MANAGEMENT DISTRICT
- U.E. UTILITY EASEMENT